

052714

RECEIVED
LARAMIE COUNTY
CHEYENNE, WY.

'88 DEC 27 PM 4 38

CERTIFIED LAND CORNER RECORDATION

DESCRIPTION OF CORNER EVIDENCE FOUND, AND ORIGINAL RECORD (if known)

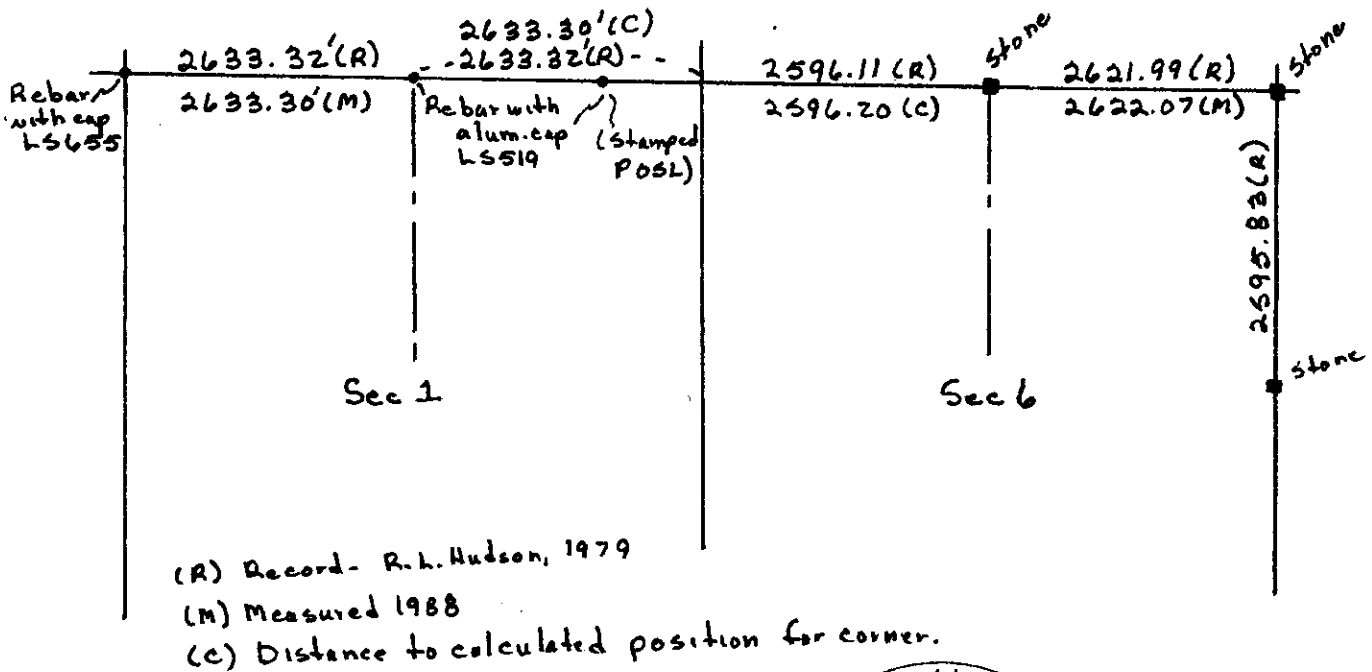
T 14		
N	36	31
T 13	1	6
N	R65W	R64W

Corner recordation by R.L. Hudson shows that a rebar with plastic cap, LS 655, monumented this corner as of May, 1979. This monument was at 4.62 feet from the USGS benchmark. As of March, 1988, the rebar could not be found and measuring the 4.62 from the benchmark fell on a railroad tie which is the corner post for a new fence. Apparently, the township corner was destroyed during the construction of the fence.

DESCRIPTION OF MONUMENT AND ACCESSORIES ESTABLISHED TO PERPETUATE THE ORIGINAL LOCATION OF THIS CORNER:

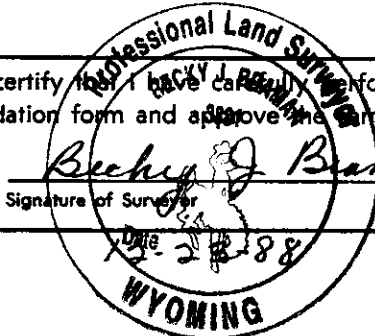
Position for the township corner was determined from evidence of R.L. Hudson's map of survey and corner recordation. A rebar and Surv-kap was found for the POSL, confirmed by the measurements shown below. See Map of Survey filed with Laramie County Clerk for dimensions to adjacent corners.

SKETCH, WITH COURSE AND DISTANCE TO ADJACENT CORNER IF DETERMINED IN THIS SURVEY. (May Sketch or Paste Reproduction on Reverse Side.)



(R) Record - R.L. Hudson, 1979
 (M) Measured 1988
 (C) Distance to calculated position for corner.

I, BECKY J. BRAMAN certify that I have carefully performed or reviewed the work done on the diagrammed corner as reported on this recordation form and approve the same.



Becky J. Braman PLS 3881
Signature of Surveyor Registration No.

STATE OF WYOMING,
Office of Clerk and Recorder,
County of LARAMIE

This "corner record" was filed for record on the 27th day of December, 1988, was noted on the cross-index plat and is assigned page No. _____, in book No. _____

Joseph C. Whitehead
County Official

Cross Index No.	<u>A1</u>	T. <u>13N</u>	R. <u>64W</u>	Mer.
	<u>A25</u>	T. <u>13N</u>	R. <u>65W</u>	Mer.
	<u>21</u>	T. <u>14N</u>	R. <u>64W</u>	Mer.
	<u>225</u>	T. <u>14N</u>	R. <u>65W</u>	Mer.
		T. _____	R. _____	Mer.
		T. _____	R. _____	Mer.
		T. _____	R. _____	Mer.